



## Features

### Eco-Friendly Refrigerant

R290 refrigerant with a global warming potential (GWP) of 3

### Easy to Clean

Aluminum interior, coved corners, finished edges, and removable shelves

### High-Strength Door

Heavy-duty, stainless steel door assembled using high-load brackets for long lasting durability

### Long-Lasting, Removable Gaskets

Santoprene™ gaskets last four times longer than standard gaskets

### High-Density Insulation

Foamed-in-place, CFC-free polyurethane insulation for maximum strength, rigidity, and insulation

### High-Efficiency Refrigeration System

Forced air circulation provides uniform temperature throughout the cabinet

### Cabinet Capacity

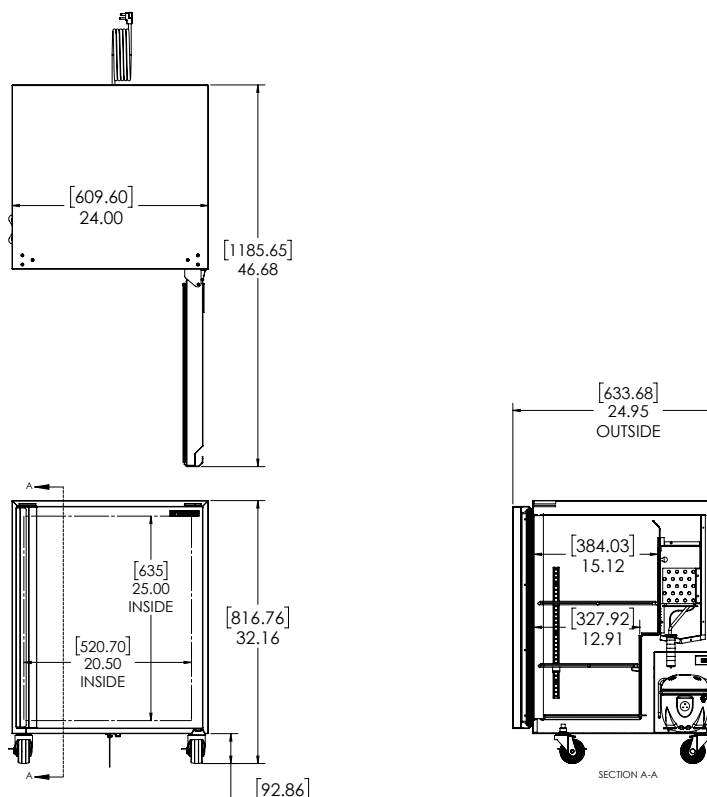
Internal area of 4.2ft<sup>3</sup> with two (2) heavy-gauge wire shelves — adjustable in 1/2" increments using stainless steel pilasters

### Heavy-Duty Soft Casters

Secured to a 12 gauge steel base to ensure years of worry-free operation

### Stainless Steel Exterior

Galvanized back and bottom to reduce the risk of corrosion



## Technical Specifications

<b>Electrical Requirements</b>	115v/60hz/1ph/2.4A/NEMA 5-15P Plug
<b>Product Dimensions</b>	24"W x 32.16"H x 24.95"D (60.96cm x 81.69cm x 63.37cm)
<b>Unit Weight</b>	125lbs (56.70kg)
<b>Shipping Dimensions</b>	30"W x 37"H x 29"D/18.63ft <sup>3</sup> (76.20cm x 93.98cm x 73.66cm/.53m <sup>3</sup> )
<b>Shipping Weight</b>	140lbs (63.50kg)
<b>Shipping Cubic Dimensions</b>	18.63ft <sup>3</sup> (.53m <sup>3</sup> )
<b>Temperature Range</b>	36 to 38 (2.22 to 3.33°C)
<b>Refrigerant</b>	R290

<b>Insulation</b>	Foamed-in-place, CFC-free polyurethane
<b>Exterior Construction</b>	Stainless steel exterior with galvanized back and bottom
<b>Interior Construction</b>	Aluminum interior with coved corners and finished edges
<b>Doors</b>	One (1) right-hand swing door
<b>Interior Capacity</b>	4.2ft <sup>3</sup>
<b>Door/Drawer Gasket</b>	Santoprene™ gasket
<b>Shelves</b>	Two (2) heavy-gauge wire shelves
<b>Casters</b>	Four (4) 3" heavy-duty soft casters (two locking)
<b>Certifications</b>	ETL Safety, ETL Sanitation
<b>Warranty</b>	3-year parts and labor, 5-year compressor (part only)

Model Number	Description
SKR24A-ESUS1	Undercounter Refrigerator 24", 115v/60hz/1ph, single right-hand swing door, 3" heavy-duty soft casters (two locking), NEMA 5-15P

To learn more about **Undercounter Refrigerator**, visit [silverking.com](https://silverking.com)