



Features

Eco-Friendly Refrigerant

R290 refrigerant with a global warming potential (GWP) of 3

Standard 10" Cutting Board

Removable 10" polyethylene cutting board provides a durable work surface

Stainless Steel Exterior

Galvanized back and bottom to reduce the risk of corrosion

High-Efficiency Refrigeration System

Forced air circulation provides uniform temperature throughout the cabinet

Stainless Steel Exterior

Galvanized back and bottom to reduce the risk of corrosion

Magnetic 'Thermo Rubber' Gaskets

Heavy-duty, stainless steel door with a magnetic 'Thermo Rubber' gasket ensure an air-tight cabinet

High-Density Insulation

Foamed-in-place, CFC-free polyurethane insulation for maximum strength, rigidity, and insulation

Refrigerated Countertop Compartments

Hold up to twelve (12) 1/6 size pans to position key ingredients — pan adapters included

Large Cabinet Capacity

Internal area of 8.3 cubic feet with four (4) heavy-gauge wire shelves — adjustable in 1/2" increments using stainless steel pilasters

High-Strength Doors

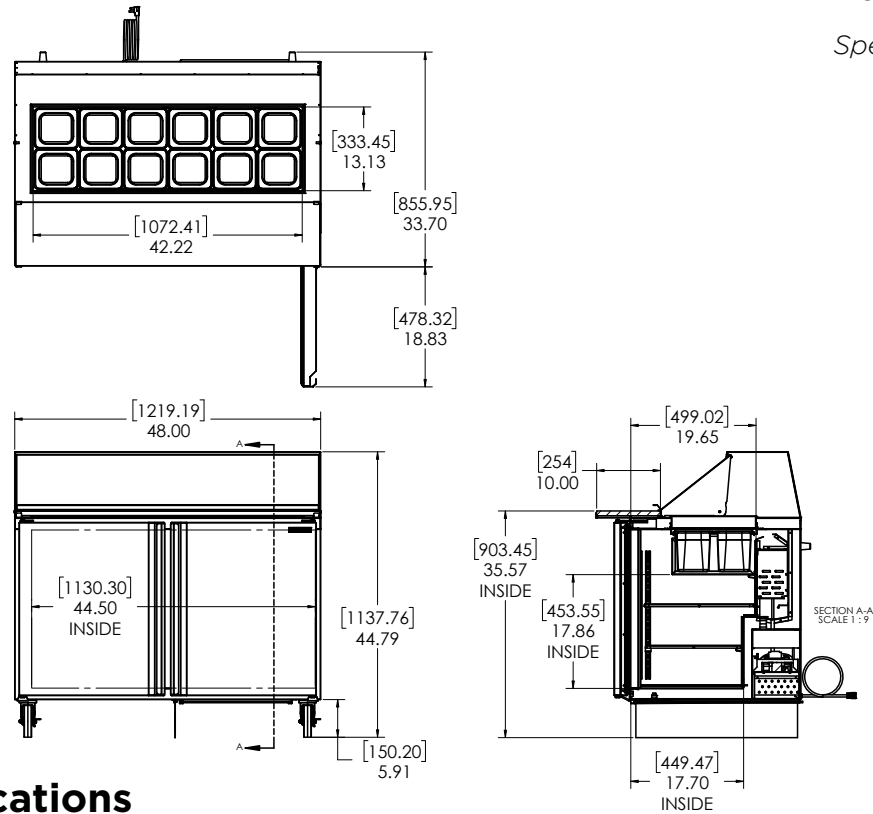
Heavy-duty, stainless steel doors are assembled using high-load brackets for long lasting durability

Easy to Clean

Aluminum interior, coved corners, finished edges, removable cutting board, and top compartment crumb tray for simple cleaning

Heavy-Duty Soft Casters

Secured to a 12 gauge steel base to ensure years of worry-free operation



Technical Specifications

Electrical Requirements	115v/60hz/1ph/4.1A/NEMA 5-15P Plug
Product Dimensions	48"W x 44.79"H x 33.7"D (121.92cm x 113.77cm x 85.60cm)
Product Weight	295lbs (133.81kg)
Shipping Dimensions	53"W x 47"H x 35"D (134.62cm x 119.38cm x 88.90cm)
Shipping Weight	325lbs (147.42kg)
Shipping Cubic Dimensions	50.45ft ³ (1.43m ³)
Temperature Range	36 to 40°F (2.2 to 4.4°C)
Refrigerant	R290
Insulation	Foamed-in-place, CFC-free polyurethane
Exterior Construction	Stainless steel exterior with galvanized back and bottom

Interior Construction	Aluminum interior with coved corners and finished edges
Doors	Two doors, one (1) left hand and one (1) right hand swing
Shelves	Four (4) heavy-gauge wire shelves
Lid	Stainless steel (with rear hood)
Pan Well Capacity	Includes twelve (12) 1/6 size pans (6" deep) — pan adapters included
Internal Capacity	8.3ft ³
Door Gasket	Santoprene™ gasket
Cutting Board	One (1) 10" deep cutting board (removable)
Casters	Four (4) 5" heavy-duty casters (two locking)
Certifications	ETL Safety, ETL Sanitation
Warranty	3-year parts and labor, 5-year compressor (part only)

Model Number	Description
SKP4812A-ESUS1	Prep Table, 48", 115v/60hz/1ph, dual doors, 5" heavy-duty casters (two locking), 10"D cutting board, twelve 1/6 size pans, NEMA 5-15P

Accessories	Description
25567	Adapter Bars for Fractional Pans
43581	Pan 1/6 Size, 4" Deep Plastic
43643	Pan 1/6 Size, 6" Deep Plastic
27066	Pan 1/3 Size, 4" Deep Plastic
26415	Pan 1/3 Size, 6" Deep Plastic

To learn more about **Prep Table**, visit silverking.com