



Features

Eco-Friendly Refrigerant

R290 refrigerant with a global warming potential (GWP) of 3

Cabinet Capacity

Internal area of 9.59ft³ with one (1) heavy-gauge wire shelf — adjustable in 1/2" increments using stainless steel pilasters

Easy to Clean

Aluminum interior with coved corners and finished edges, removable shelf, plus a top compartment crumb tray

Magnetic 'Thermo Rubber' Gaskets

Heavy-duty, stainless steel doors with magnetic Thermo Rubber gaskets ensure an airtight cabinet

Heavy-Duty Soft Casters

Secured to a 12-gauge steel base to ensure years of worry-free operation

Elevated Refrigerated Rail

Raise key ingredients closer to the crew for easy access — holds up to seven (7) 2-quart food jars

High-Efficiency Refrigeration System

Forced air circulation provides a uniform temperature throughout the cabinet

Refrigerated Countertop Compartment

Keep key ingredients always within reach — holds up to twelve (12) 3-1/2 quart food jars or ten (10) 1/6 size pans with pan adapters included

High-Strength Doors

Heavy-duty, stainless steel doors assembled using high-load brackets for long-lasting durability

Stainless Steel Exterior

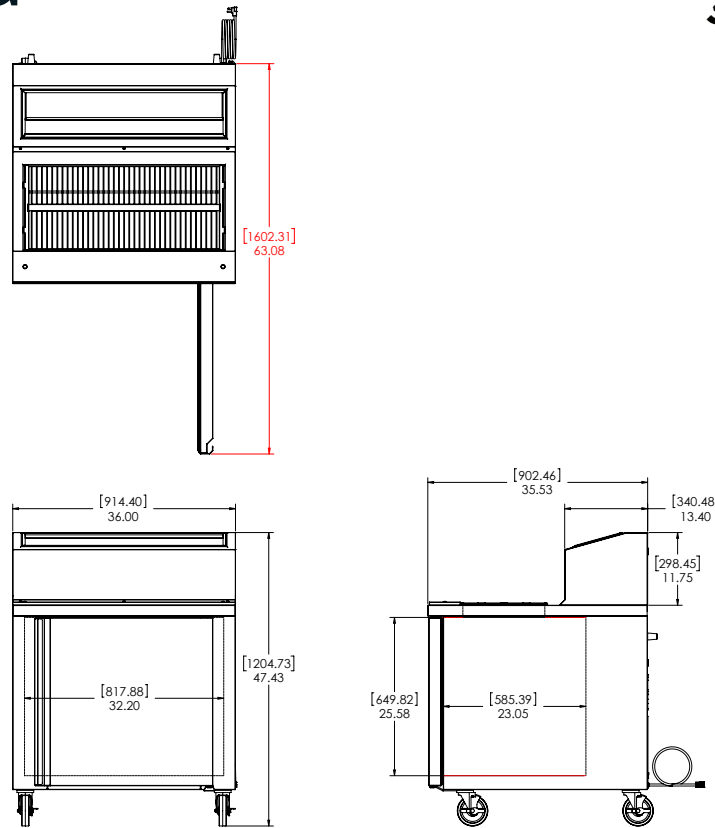
Galvanized back and bottom reduces the risk of corrosion

High-Density Insulation

Foamed-in-place, CFC-free polyurethane insulation for maximum strength, rigidity, and insulation

Cutting Board

Removable 5" polyethylene cutting board provides a large durable work surface



Technical Specifications

| | |
|----------------------------------|--|
| Electrical Requirements | 115v/60hz/1ph/2.4A/NEMA 5-15P Plug |
| Product Dimensions | 36"W x 47.43"H x 35.53"D (91.44cm x 120.47cm x 90.25cm) |
| Product Weight | 255lbs (115.67kg) |
| Shipping Dimensions | 41"W x 52"H x 42"D (104.14cm x 132.08cm x 106.68cm) |
| Shipping Weight | 275lbs (124.74kg) |
| Shipping Cubic Dimensions | 51.82ft ³ (1.47m ³) |
| Temperature Range | 36 to 40 (2.2 to 4.4°C) |
| Refrigerant | R290 |
| Charge Level | 4.2oz (119 grams) |
| Insulation | Foamed-in-place, CFC-free polyurethane |

| | |
|------------------------------|--|
| Exterior Construction | Stainless steel exterior with galvanized back and bottom |
| Interior Construction | Aluminum interior with coved corners and finished edges |
| Doors | One (1) right-hand swing door |
| Pan Well Capacity | Twelve (12) 3-1/2 quart pans or ten (10) 1/6 size pans |
| Rail Capacity | Seven (7) 3-1/2 quart pans, adapters included |
| Internal Capacity | 8.59ft ³ |
| Rail Temperature | 36 to 40°F |
| Door Gasket | Santoprene™ |
| Shelves | One (1) heavy-gauge stainless steel wire shelf, removeable |
| Casters | Four (4) 5" heavy-duty soft casters, two (2) locking |
| Certifications | ETL Safety, ETL Sanitation |
| Warranty | 3-year parts and labor, 5-year compressor (part only) |

| Model Number | Description |
|--------------|---|
| SKRN36-ESUS1 | Fountainette, 36", 115v/60hz/1ph, single right-hand swing door, 5" cutting board, 5" heavy-duty casters (two locking), NEMA 5-15P |

To learn more about **Refrigerator**, visit silverking.com