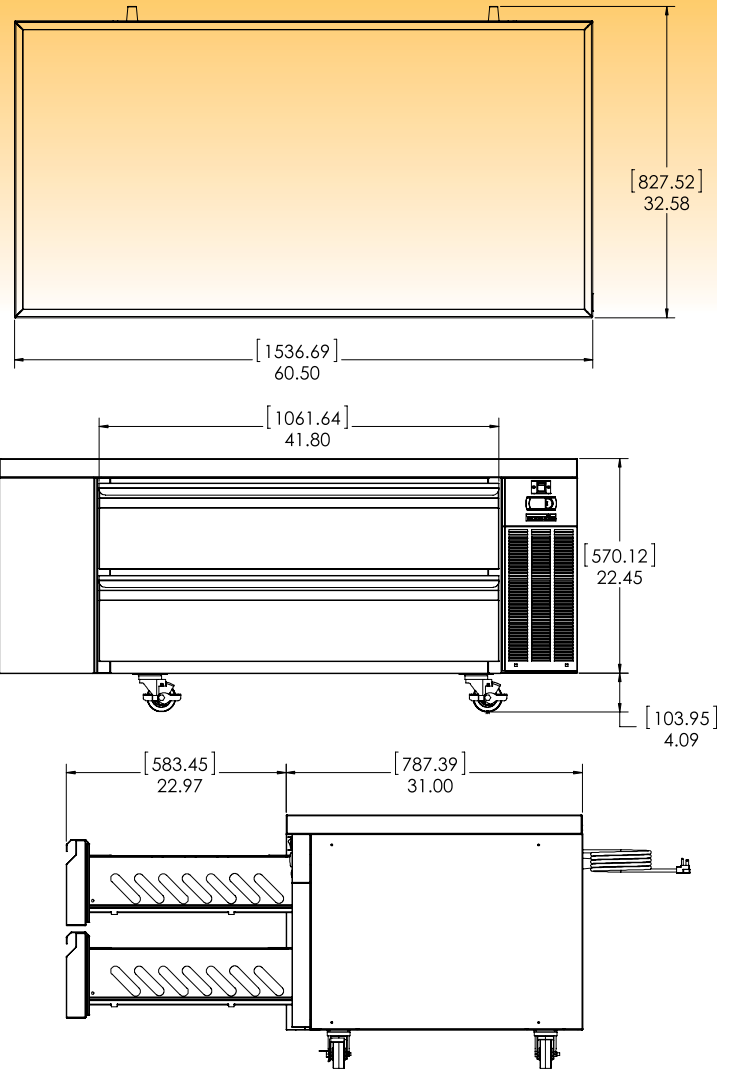
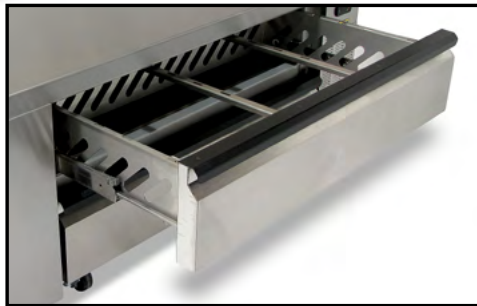




Refrigerated Chef Base

MODEL SKRCB60H/C10



| MODEL | LENGTH | DEPTH | HEIGHT | COMPRESSOR | AMPS | WEIGHT |
|--------------|--------|--------|--------|------------|------|----------|
| SKRCB60H/C10 | 60.50" | 32.58" | 26.54" | 1/4 HP | 3.0 | 395 lbs. |

| | |
|-----------------------|--|
| EXTERIOR | Stainless steel, galvanized back. |
| INTERIOR | Aluminum. Coved corners and finished edges for ease of cleaning. |
| INSULATION | Environmentally friendly foamed-in-place polyurethane for maximum strength and durability. |
| DRAWERS | Full extension drawers with drawer slides welded to 12-gauge stainless steel framework. This premier slide and framework construction promotes lateral stability while offering high dynamic load capacities and a stay-shut feature. All drawers accommodate full size 12" x 20" x 6" deep hotel pans and 6" deep fractional pans. Drawers lift out for cleaning. |
| DRAWER GASKETS | Santo Prene material lasts four times industry standard. |
| REFRIGERATION | CFC-free, 134a refrigerant, hermetically sealed, high efficiency, self contained refrigeration system. |
| ELECTRICAL | Standard 115 volt, 60 Hz, single phase. 8 foot, 3-wire power cord with NEMA 5-15 plug. |
| LISTINGS | ETL Safety (U.S. and Canada), ETL Sanitation. |
| WARRANTY | One year parts and labor. Five year warranty on heavy duty drawer assemblies and compressor. |



1600 Xenium Lane North
 Minneapolis, MN 55441-3787
 Phone (763) 923-2441
 Fax (763) 553-1209
 www.silverking.com



Specifications subject to change without notice.

1/2015
 © Silver King 2015
 Printed in U.S.A.